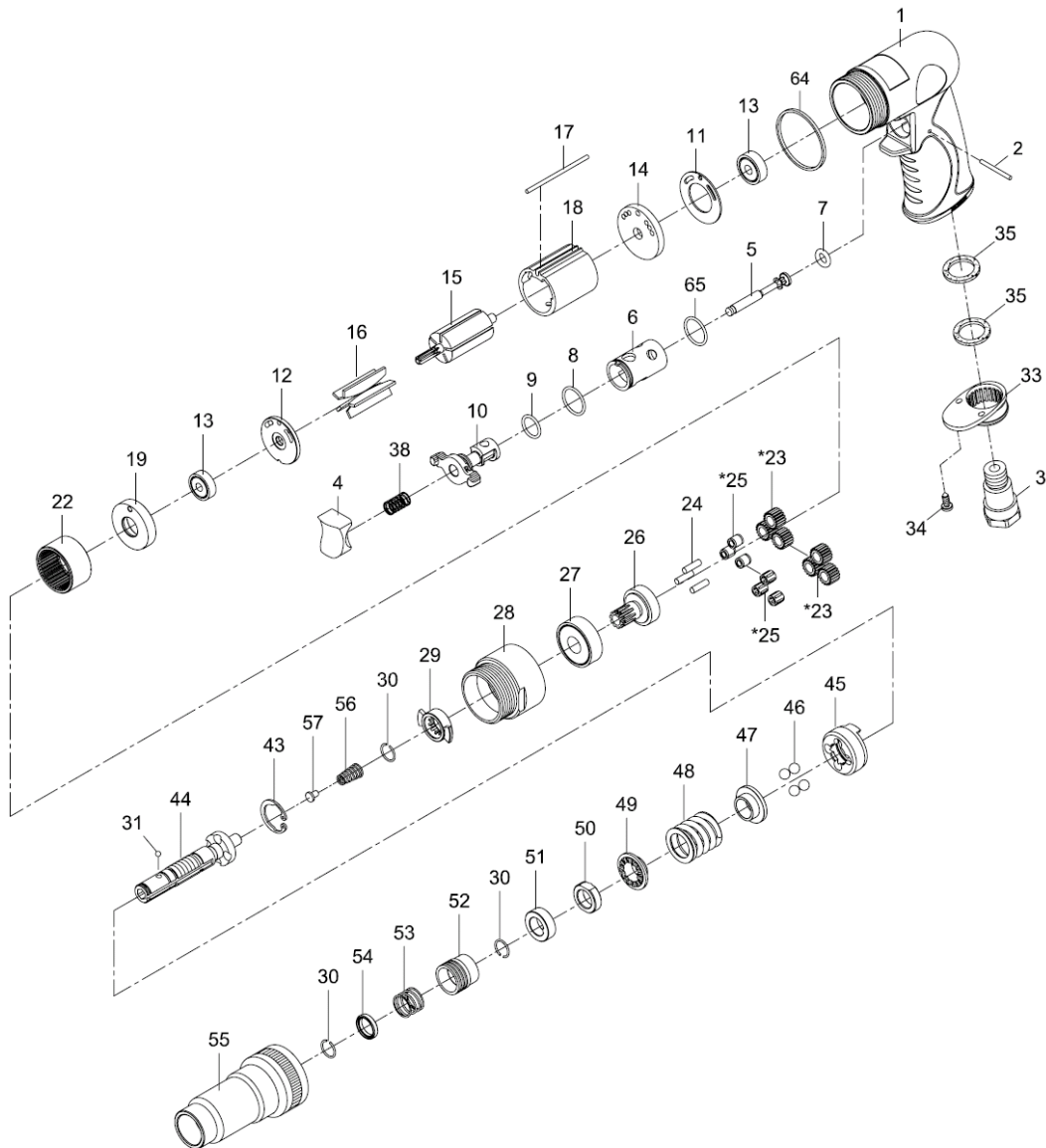


# SENCO

SEN610C

SCREWDRIVER ADJUSTABLE CLUTCH



Index No.	Parts No.	Description	Index No.	Parts No.	Description
1	75-7253P01	Motor Housing	27	080227	Ball Bearing (6201z)
2	822202	Pin (2,5x26.8)	28	80228	Clamp Nut
3	75-725303	Air Inlet	29	80229	Drive Dog
4	75-725304	Trigger	30	80230	Retaining Ring (3)
5	75-725305	Valve Stem	31	40145	Steel Ball (1/8")
6	75-725306	Valve Bushing	33	70110-21	Exhaust Diffuser
7	72807-12	O-Ring (4.5x2.5)	34	40309	Screw (2) (TS2.9)
8	795820	O-Ring (15,5x1,5)	35	75-725350	Damping Material (2)
9	80209	O-Ring (12x1,6)	38	82208	Valve Spring
10	75-725310	Reverse Lever	43	80231	Snap Ring (RTW-21)
11	80211	Motor Gasket	44	80232	Cam Spindle
12	80214	End Plate	45	80234	Clutch
13	030113	Ball Bearing (2) (626zz)	46	80235	Steel Ball (4) (1/4")
14	75-725314	Rear End Plate	47	80236	Thrust Washer
15	80215-12	Rotor	48	80237	Spring
16	80216	Rotor Blade (5)	49	80238	Washer
17	75-725317	Pin (2,5x57)	50	80239	Adjust Nut
18	80218-22	Cylinder	51	80240	Spacer
19	80219	Front End Plate	52	80242	Ball Retainer
22	80222	Internal Gear	53	80243	Spring
*23	80223-11	Planet Gear (3)	54	80244	Washer
	80223-14	Planet Gear (3)	55	80241	Clutch Housing
24	30124	Pin (3) (4x13,8)	56	80220	Spring
*25	80225	Bushing (3)	57	80221	Spring Guide
	080245	Needle Bearing (3) (4x7x8)	64	75-725351	Decoration Ring
26	80226	Work Spindle	65	72009	O-Ring (15.7x1.7)

\*Optional Parts

82-7253P-0001