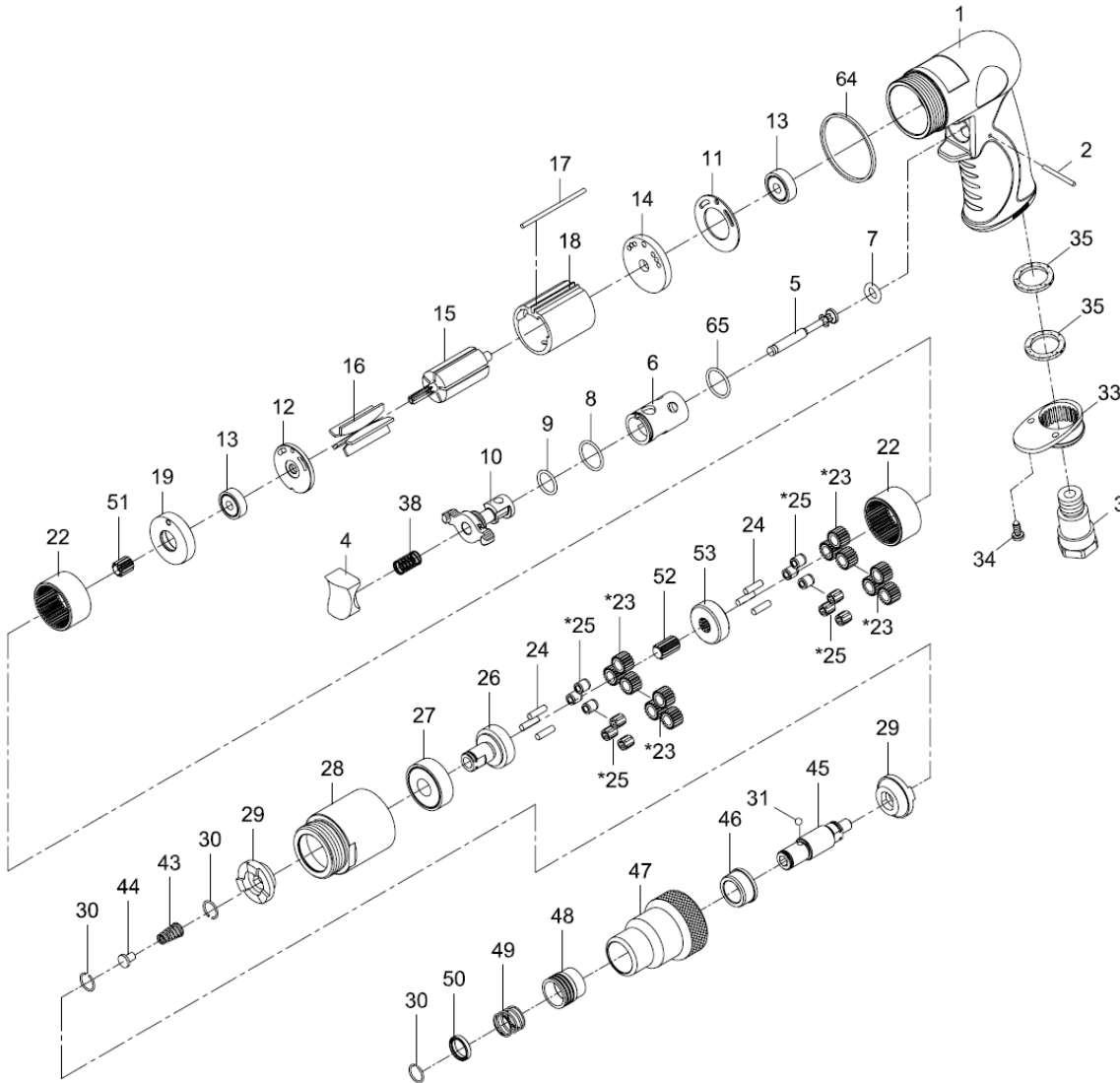


SENCO

SEN612C

SCREWDRIVER POSITIVE CLUTCH



Index No.	Parts No.	Description	Index No.	Parts No.	Description
1	75-7253P01	Motor Housing	*25	070428	Needle Bearing (6) (4x6x8)
2	822202	Pin (2.5x26.8)	26	83326	Work Spindle
3	75-725303	Air Inlet	27	080227	Ball Bearing (6201z)
4	75-725304	Trigger	28	80328	Clamp Nut
5	75-725305	Valve Stem	29	80429	Clutch (2)
6	75-725306	Valve Bushing	30	80230	Retaining Ring (3)
7	72807-12	O-Ring (4.5x2.5)	31	40145	Steel Ball (1/8")
8	795820	O-Ring (15.5x1.5)	33	70110-21	Exhaust Diffuser
9	80209	O-Ring (12x1.6)	34	40309	Screw (2) (TS2.9)
10	75-725310	Reverse Lever	35	75-725350	Damping Material (2)
11	80211	Motor Gasket	38	82208	Valve Spring
12	80214	End Plate	43	80220	Spring
13	030113	Ball Bearing (2) (626zz)	44	80221	Spring Guide
14	75-725314	Rear End Plate	45	80432	Cam Spindle
15	80215-12	Rotor	46	80435	Bushing
16	80216	Rotor Blade (5)	47	80436	Clutch Housing
17	75-725317	Pin (2.5x57)	48	80242	Ball Retainer
18	80218-22	Cylinder	49	80243	Spring
19	80219	Front End Plate	50	80244	Washer
22	80222	Internal Gear (2)	51	70420	Pinion Gear
*23	70423-11	Planet Gear (6)	52	70421	Center Gear
	70423-14	Planet Gear (6)	53	70427	Reduction Spindle
24	30124	Pin (6) (4x13.8)	64	75-725351	Decoration Ring
*25	70425	Bushing (6)	65	72009	O-Ring (15.7x1.7)

* Optional Parts

86-7253P-0001