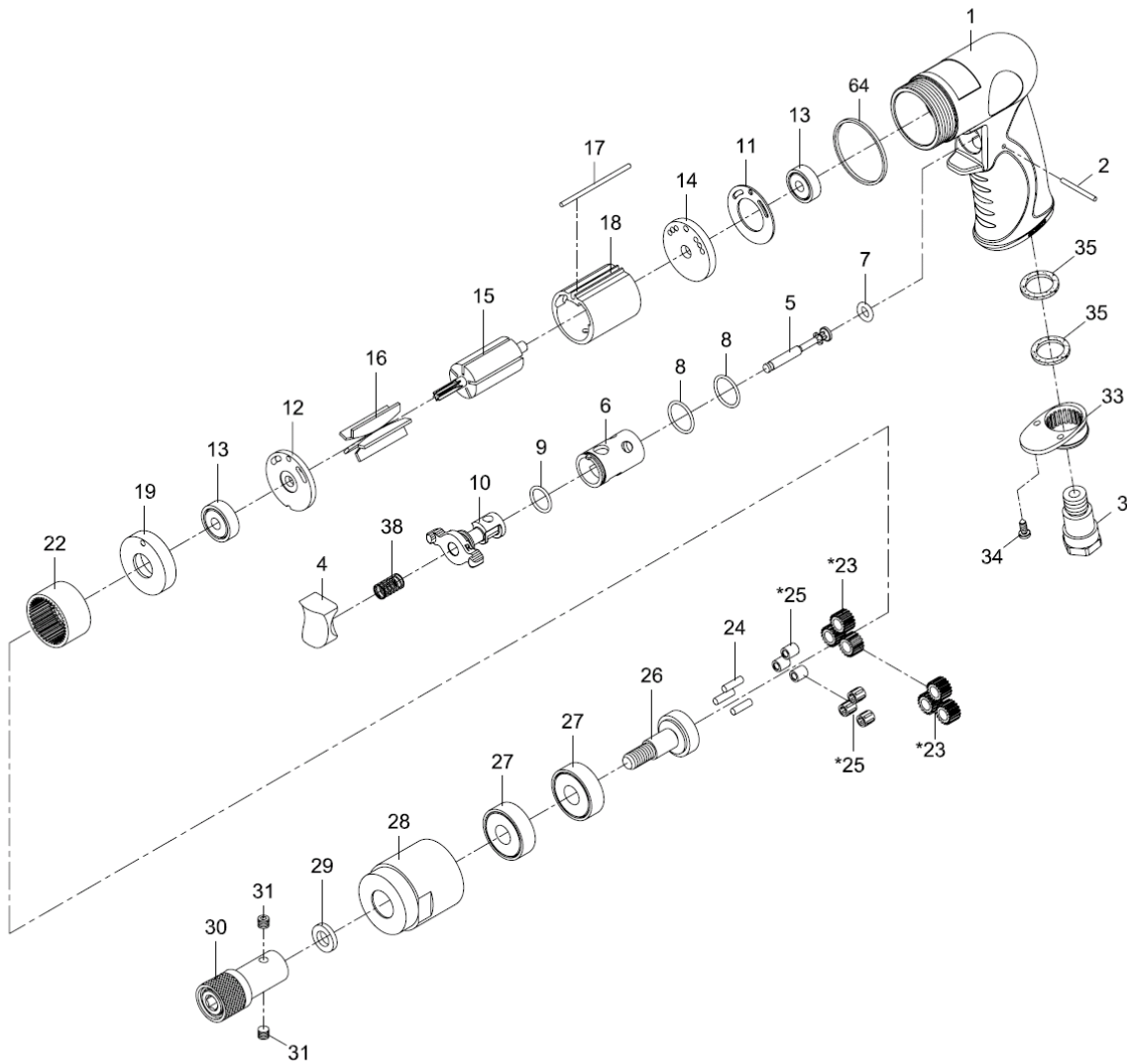


SENCO

SEN600C

DIRECT DRIVE SCREWDRIVER



Index No.	Parts No.	Description	Index No.	Parts No.	Description
1	75-7253P01	Motor Housing	19	80219	Front End Plate
2	822202	Pin (2.5x26.8)	22	80222	Internal Gear
3	75-725303	Air Inlet	*23	80223-11	Planet Gear (3)
4	75-725304	Trigger	*23	80223-14	Planet Gear (3)
5	75-725305	Valve Stem	24	30124	Pin (3) (4x13.8)
6	75-725306	Valve Bushing	*25	80225	Bushing (3)
7	72807-12	O-Ring (4.5x2.5)	*25	080245	Needle Bearing (3) (4x7x8)
8	795820	O-Ring (2) (15.5x1.5)	26	70626	Work Spindle
9	80209	O-Ring (12x1.6)	27	080227	Ball Bearing (2) (6201z)
10	75-725310	Reverse Lever	28	70534	Clamp Nut
11	80211	Motor Gasket	29	70133	Washer
12	80214	End Plate	30	QC-01SUB	Quick Change Chuck (1/4")
13	030113	Ball Bearing (2) (626zz)	31	71946	Set Screw (2) (M5x4)
14	75-725314	Rear End Plate	33	70110-21	Exhaust Diffuser
15	80215-12	Rotor	34	40309	Screw (2) (TS2.9)
16	80216	Rotor Blade (5)	35	75-725350	Dampng Material (2)
17	75-725317	Pin (2.5x57)	38	82208	Valve Spring
18	80218-22	Cylinder	64	75-725351	Decoration Ring

* Optional Parts

88-7253P-0001